



# Password Managers Wireless Printing Readers View



Jere Minich

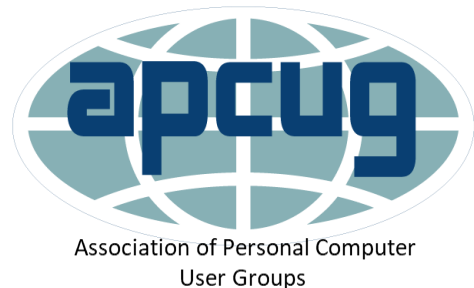
[programlscs@gmail.com](mailto:programlscs@gmail.com)

May 2021

Windows 10 Pro Version 20H2

Screenshots are from my Windows 10 PC

**Jere's Tech Tips**



# Consumer Reports says: about Password Managers

- One of the top safety practices recommended by security experts.
- These services can help defend against criminals by;
  - generating and storing a different password,
  - one that's long and complicated,
  - for each of the online accounts.
- The nuts and bolts are confusing,
  - how to set up the service,
  - where their passwords will be stored,
  - how to share passwords with a spouse,
  - how password managers work with smartphone apps.

# Password managers

## What do they Do?

- Store login information for all the websites in use.
  - User ID
  - Password.
- Automatic log-in to Web Sites.
- Encrypt the password database:
  - with a master password.
- The master password is the **only** one to remember.

# How safe are PWM's

- More secure than the alternatives.
- Protect passwords vault with strong encryption (AES-256);
  - even while it's stored in the cloud.
    - AES-256 is Advanced Encryption Standard 256 Bits,
      - number of bits is equal to the number of characters.
    - a symmetric-key algorithm,
    - the same key is used for both encrypting and decrypting the data.
- PWM program and employees must:
  - have “zero knowledge” of passwords.
  - up-front and transparent about how they protect data.



## Sign-In

Email or mobile phone number

██████████@gmail.com

Continue

By continuing, you agree to Amazon's [Conditions of Use](#) and [Privacy Notice](#).

▶ [Need help?](#)

New to Amazon?

Create your Amazon account

[Conditions of Use](#) [Privacy Notice](#) [Help](#)

© 1996-2021, Amazon.com, Inc. or its affiliates

What PassWord Managers Do



## Sign-In

██████████@gmail.com [Change](#)

Password

[Forgot your password?](#)

●●●●●●●●●● 

Sign-In

Keep me signed in. [Details](#) ▾

[Conditions of Use](#) [Privacy Notice](#) [Help](#)

© 1996-2021, Amazon.com, Inc. or its affiliates

Example of Last Pass Password Manager



onus

d through  
stores and

Only one Password  
for this sight

Example of Last Pass  
Password Manager

Welcome back

Username

\_\_\_\_\_

Password

\_\_\_\_\_

Remember me      Use token >

**Sign in**

[Forgot username/password? >](#)

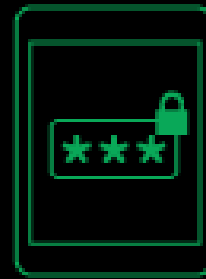
[Not enrolled? Sign up now. >](#)



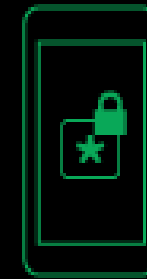
Can a password manager work on multiple devices?



Desktop



Tablet



Mobile

An Important Question when  
picking a PassWord Manager  
Program.

# PWM 3 Types

- **Locally installed or offline password managers.**
  - Installed on the device.
- **Web-based or online password manager services.**
  - store passwords on a cloud,
- **Stateless or token-based password managers**
  - a local piece of hardware, such as a flash USB device,
  - contains a key to unlock your particular account,
  - no such thing as a password vault because the password manager generates them anew every time you log in.



# Offline Password Managers

- Place that information in a single file on the PC.
  - encrypt the file.
- How to get to the password manager data?
  - a master password.
- The password manager will require creation of a password that's needed to decrypt the file,
  - may be known as a vault or a database,
  - that contains all of the other passwords/data.

# Online Password Managers

- Online Password Manager store the data online;
  - usually in the Cloud,
    - A building somewhere full of storage devices.
  - can access them from more than one device,
  - internet required.

Stateless token-based  
password managers



Numerous third-party tokens available

# Consider these features when looking for a top password manager:

- Unlimited password storage.
- Unlimited devices.
- Security center / audit service; (built into the S/W)
  - to help analyze existing passwords.
- Backup services;
  - will help restore if there are any issues.
- Cloud services;
  - auto syncing across devices.
- Auto save new passwords;
  - saves as typed or created.

# Consider these features when looking for a top password manager:

- Auto change passwords;
  - to change a password, the software can do it in house.
- Import / export;
  - to save manually entering each one.
- Password generator;
  - creates a completely random and secure password.
  - may look a bit like this
    - a#Vb35kjbsdffv\$486jh\*Dsafo (26 Characters)
- Allows user to generate the Password;
  - Use a phrase (thehoUseisr%dandt@eshutters?regreen)

# Best PWM Free (5)

- **Keepass**
- **StickyPassword**
- **DashLane Password Manager**
- **LogMeOnce**
- **LastPass**
- **PC magazine reference.**  
<http://bit.ly/3bwSalj>

<https://www.lastpass.com/>

New Global Password Security Report: See how businesses around the world are keeping up with password security and authentication needs >

# EFFORTLESS SECURITY FROM ANYWHERE.

Life is happening online. Work. Play. Family and friends. LastPass puts your digital life at your fingertips, simply and securely.

The PWM I use.

## Personal

Store all of you and your family's passwords across all your devices without sacrificing security.

## Business

Connect employees to their work while maintaining complete visibility and control.

## Auto-pilot for all your passwords

LastPass removes obstacles, letting you get back to the things you love most.





# Wireless Printing

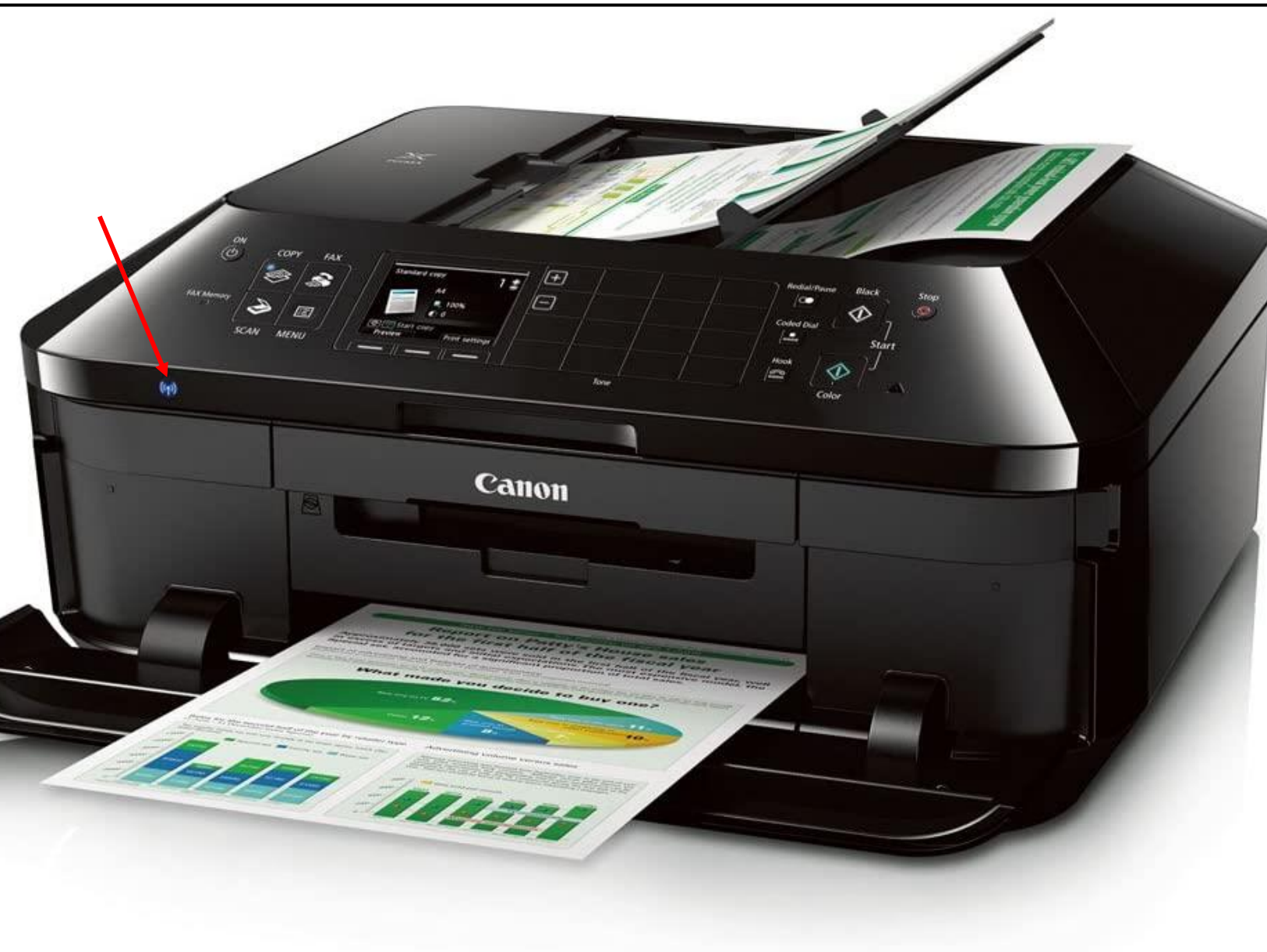
Jere Minich

[jminich@apcug.org](mailto:jminich@apcug.org)



# Wireless Printing

Screenshots from my Windows  
10 PC and  
My **Canon PIXMA MX 922 Printer**  
5 cartridges  
Cyan, Yellow, Magenta, Black,  
Large Black

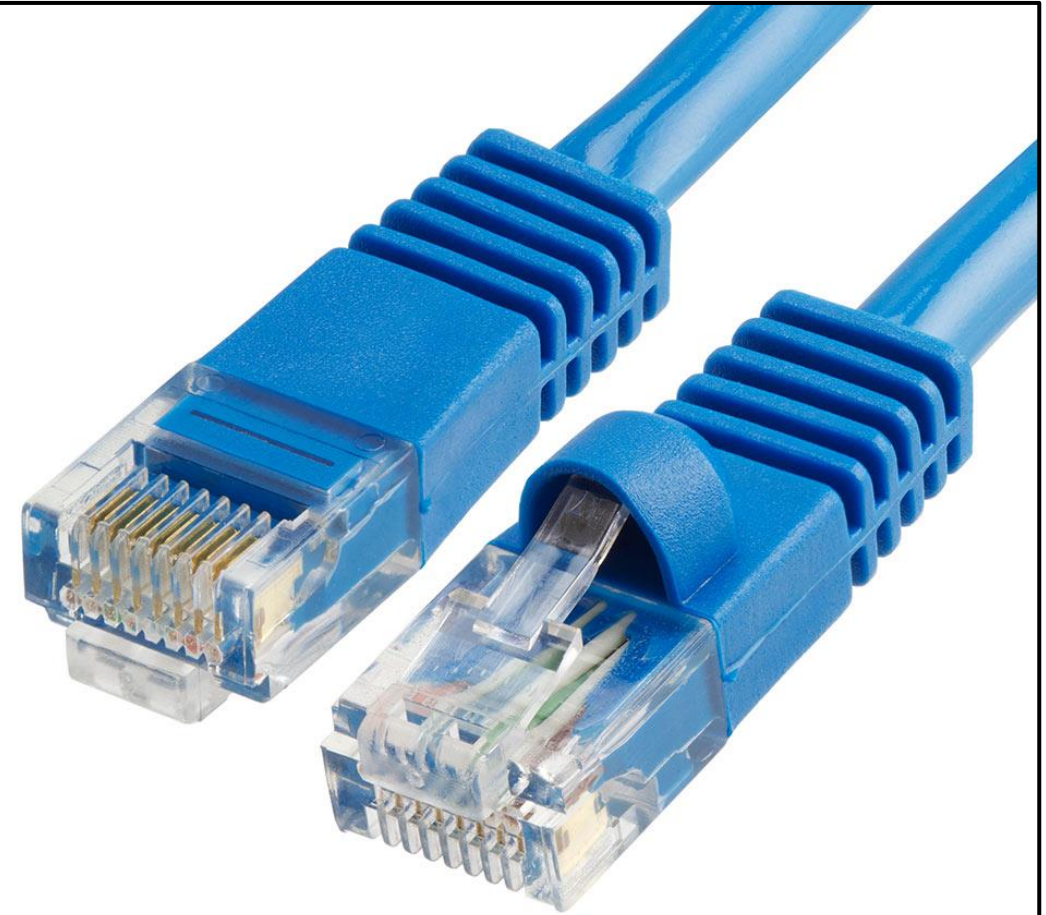


# What is a wireless network?

- A wireless network includes:
  - a device called a wireless **router**:
    - that sends and receives **radio signals**
      - similar to a cordless phone base station.
  - Other wireless devices on the network, like computers and printers,
    - are like the cordless phone handsets.
  - All communication on the wireless network runs through the wireless router,
    - allowing the connected devices to talk to each other,
    - as well as share an internet connection provided by an Internet Service Provider (ISP).
- Wireless routers provide physical a connection point(s) for wired network devices;
  - such as computers, & printers.
  - A special cable called an **Ethernet cable** is used.



Different types of Routers



Ethernet Cable

Some ISP's supply a single box that is a combination  
**Modem/Router**

# What is a wireless printer?

- A wireless printer:
  - contains a wireless adapter (a circuit board)
  - that connects to a wireless network (a radio wave signal)
  - and allows computers and smart devices connected to that “Same Network” to use the printer.
- Because the connection is wireless,
  - place the printer in any convenient location in the home.
- The location of the printer allows a strong signal between the printer and the wireless router.

# Is using a wireless printer secure?

- The printer will use the same wireless security methods as the wireless computers on your wireless network,
  - It is no less secure.
- The presence of a wireless printer on the network does not make the network less secure.

# How does a wireless printer connect to my wireless network?

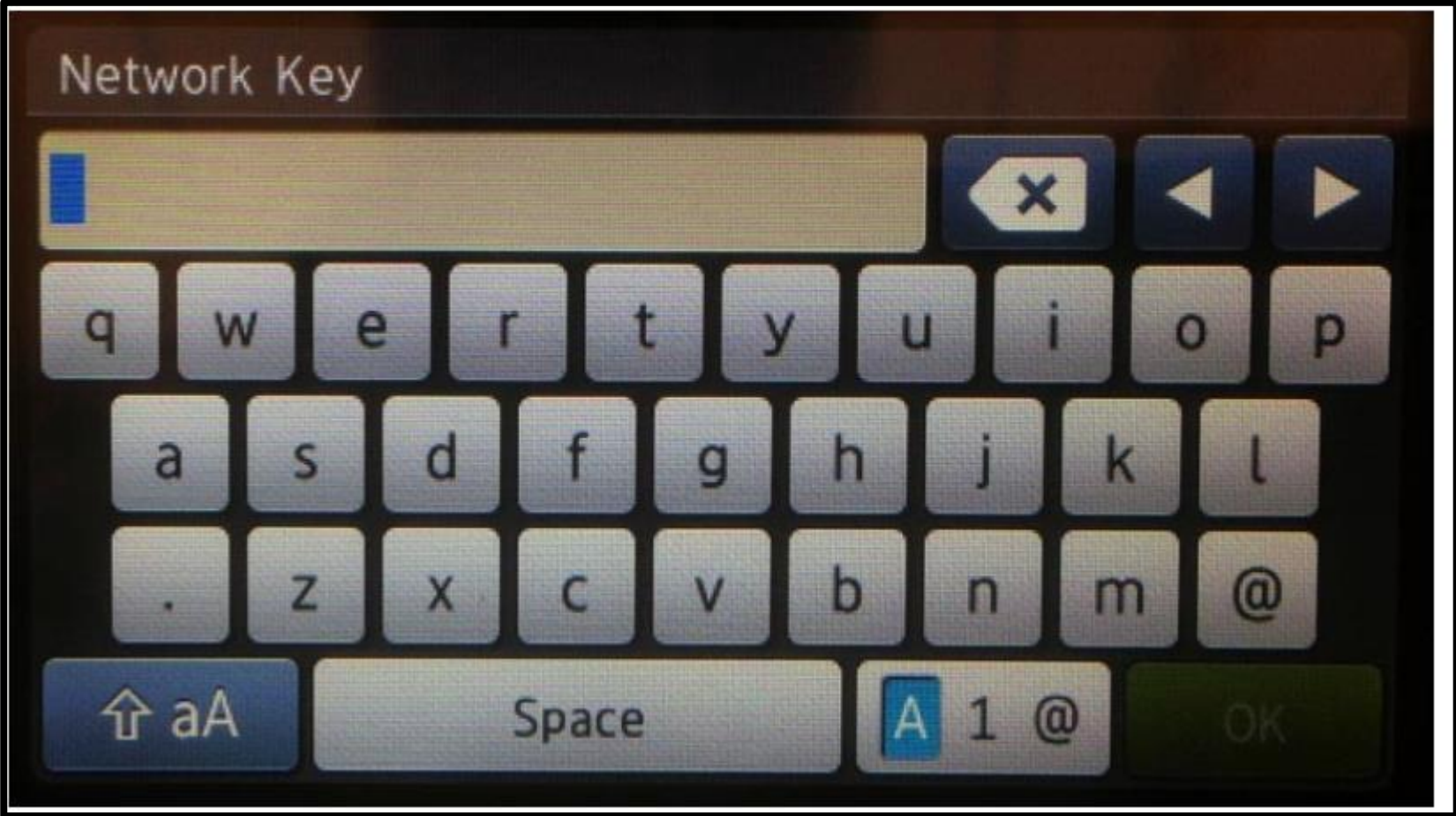
- There are multiple methods.
  1. Printers which have displays provide a front panel Wireless Setup Wizard accessible from the Wireless Menu.
    - A. The Wireless Setup Wizard will display a list of wireless networks detected.
    - B. Select the network you want the printer to connect to.
    - C. Enter the wireless password (if the network is using security).
  2. Printers without displays use a software driven process.
    - A. uses a temporary USB cable connection between the printer and computer to configure the printer.
    - B. run the printer software on the computer and follow instructions.

**Note** – all devices that want to use the printer must be also connected to the same wireless network.





Wireless icon on the printer



Front Panel Display.

# How to Connect a device to a wireless printer.

- 1. Turn the wireless printer on and access its network configuration menu
- 2. Install a wireless printer on the Windows 10 computer.
- 3. Install a wireless printer on your smartphone(s) and tablet(s).

**NOTE:** New printers come with a Disk (CD). Do **not** use it. Go to the printer website and download the latest driver software.

Example: **Canon MX 922 Drivers** (enter into the search engine)



## Ask a Question

## Models related to this article

PIXMA MX922

Printable version

Email Article

## Install the software applications - MX922

Article ID: ART140409 | Date published: 05/13/2015 | Date last updated: 03/06/2019

### Description

Learn how to install the software applications.

### Solution

### Install software

1. Go to [MX922 Drivers & Downloads](#).
2. The operating system of your computer should already be detected but select it if not.
3. Select the the **Software** tab if necessary.
4. Click the **Select** button to the right of the name of the software you want to download. Then click **Download**.
5. Once the download is complete, select the file to begin the installation.

**Canon MX 922 Drivers**

Settings

Home

Find a setting

Devices

Bluetooth & other devices

Printers & scanners

Mouse

Touchpad

Typing

Pen & Windows Ink

## Printers & scanners

Add printers & scanners



Add a printer or scanner

## Printers & scanners



Canon MX920 series FAX



Canon MX920 series Printer



CanoScan LiDE 400

Device can perform faster when connected to USB 3.0



EPSON0B27FC (WF-3530 Series)

Default, Offline

Install a wireless printer on the Windows 10.

Settings

Home

Find a setting

Devices

Bluetooth & other devices

Printers & scanners

Mouse

Touchpad

Typing

Pen & Windows Ink

AutoPlay

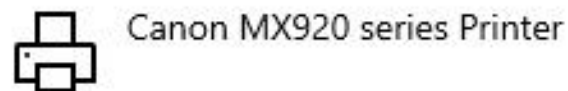
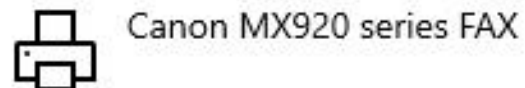
## Printers & scanners

Add printers & scanners



The printer that I want isn't listed

## Printers & scanners



Install a wireless  
printer on the  
Windows 10

Devices

Bluetooth & other devices

Printers & scanners

Mouse

Touchpad

Typing

Pen & Windows Ink


# Printers & scanners


## Add printers & scanners



[The printer that I want isn't listed](#)

## Printers & scanners

 Canon MX920 series FAX

 Canon MX920 series Printer

Open queue

Manage

Install a wireless printer on the Windows 10

← Settings

# Canon MX920 series Printer

## Manage your device

Printer status: Idle

Open print queue

Set as default

[Print a test page](#)

[Run the troubleshooter](#)

[Printer properties](#)

[Printing preferences](#)

[Hardware properties](#)

Canon MX920 series Printer Properties

General | Sharing | Ports | Advanced | Color Management | Security | Maintenance

Canon MX920 series Printer

Location:

Comment:

Model: Canon MX920 series Printer

Features

Color: Yes	Paper available:
Double-sided: Yes	Letter 8.5"x11" 22x28cm
Staple: No	
Speed: Unknown	
Maximum resolution: Unknown	

Change Properties | Preferences... | Print Test Page

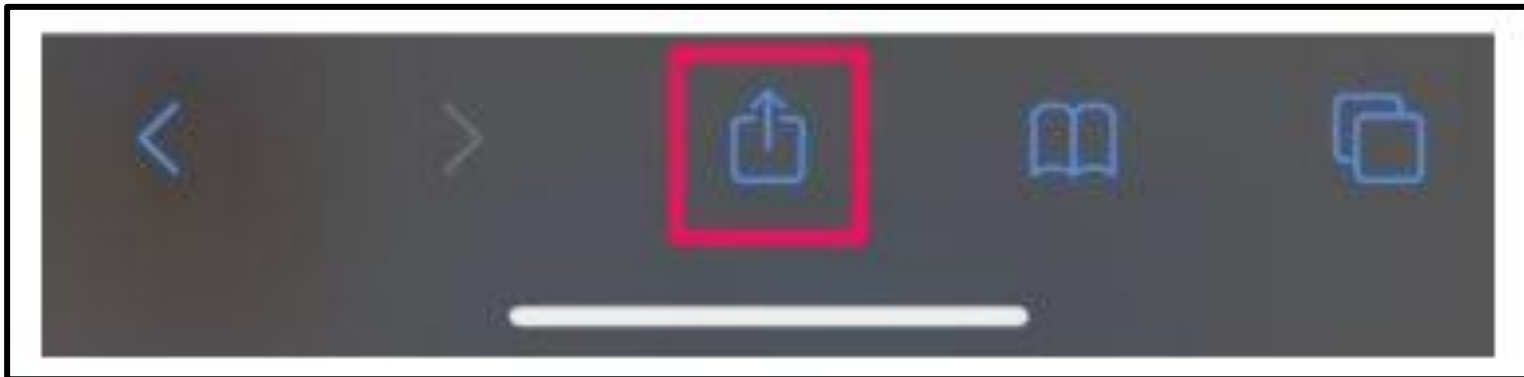
OK | Cancel | Apply | Help

**How to print from an Android smartphone or tablet**

<https://bit.ly/3omsTXU>

**Use AirPrint to print from your iPhone, iPad**

<https://apple.co/2SXxqof>



**Apple's AirPrint – iPhones or iPads**



# Readers View

Skip the ads on a  
web page.

# What is Readers View?

- Many websites visited contain;
  - banners, ads, videos, and other distracting, unrelated stuff.
- Go into “reader view” in the browser to simplify web pages.
  - the ads, banners, videos, on the web page are removed.
  - leaving the content you’re interested in.
- How to use reader view in:
  - the desktop versions of Firefox browser.
  - the iPhone or iPad.
    - the Android device. <https://bit.ly/3bTxk7R>
- **Not** all Browsers support Reader View/Mode.
  - Chrome, Brave, Firefox, Edge, Opera, Safari, **DO SUPPORT**



# Reader View Basics

- When Reader View/Mode is activated;
  - photos are compressed,
  - some photos may not appear in the article.
- When you're on a website that supports Reader View;
  - the address bar at the top of the screen will have an icon.
  - If it's not there, then it can't be used.
- It offers a simplified and enlarged version of the text and images.
- There are no ads, header, footer, JavaScript.
- The 'Immersive Reader' feature (formerly Reading View) in Microsoft Edge.

## Reader View icon.

### View a page in Reader View

1. If a page is available in Reader View, the Reader View icon  will appear in the address bar.



2. Click on the Reader View icon . The icon will turn blue when the page is in Reader View.

**Tip:** If a page is available in Reader View, you can also access Reader View from the Menu bar [when the Menu bar is enabled](#), by clicking **View** then **Enter Reader View**. Alternatively, you can press the key **F9** to toggle Reader View.

# Immersive Reader in Microsoft Edge

Manage and Delete Browsing Data x +

← → ↻ 🏠 🔒 https://www.lifewire.com/manage-and-delete-browsing-data-in-microsoft-edge-4103666

**Lifewire**

News Work@Home Best Products Phones Smart Home Streaming About Us

Advertisement

Internet, Networking, & Security → Browsers

## Manage and Delete Browsing Data Components in Microsoft Edge

Clear your browsing history data

by **Scott Orgera** Updated on March 10, 2020

Advertisement

FOR QUICK ALERTS

SUBSCRIBE NOW



[View Sample](#)

JUST IN ⌚



**Oppo Reno6 5G Live Images Surface; iPhone 12 Ripoff?**  
2 hrs ago



**Sharp Aquos R6 With 1-inch Camera, 240Hz Display Announced: Most Powerful Android Smartphone?**  
2 hrs ago



**BSNL Offering 2GB Data Per Day And Unlimited Calling With Three New Data Vouchers**  
3 hrs ago



**Xiaomi Patent Reveals Unique Dual Slider Smartphone With Secondary Display**  
4 hrs ago

MUST WATCH ▶

Home ▸ How to ▸ Tips tricks

# How to get Reading Mode on any Android device

By **Vishnu Sasidharan** | Published: Sunday, December 2, 2018, 19:04 [IST]

One Plus 5 debuted with a ton of features built into it. One Plus devices, although a handful, have a lot of features built into it that have become a staple for others to imitate. The Reading Mode that was launched with One Plus 5 is a feature that makes the whole device optimized for reading.



The grayscale mapping, the bluish light tint and all the other tiny details



**Clubhouse Beta Android Version Out; Will Its Popularity Rise?**



**Huawei And ZTE Might Not Be Included In The New Government Contract**



**WhatsApp Privacy Policy Update: Check This New Deadline To Keep Your Account Active**



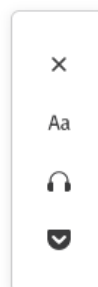
**How To Activate/Change Post Office Debit Card Green PIN Online?**



**Places To Visit In Tamil Nadu In May 2021**



**COVID-19: Rahane receives first dose of vaccine**



[gizbot.com](https://www.gizbot.com)

## How to get Reading Mode on any Android device

By Vishnu Sasidharan | Published: Sunday, December 2, 2018, 19:04 [IST]

4 minutes



One Plus 5 debuted with a ton of features built into it. One Plus devices, although a handful, have a lot of features built into it that have become a staple for others to imitate. The Reading Mode that was launched with One Plus 5 is a feature that makes the whole device optimized for reading.





# How to enable Reader View iPhone or iPad

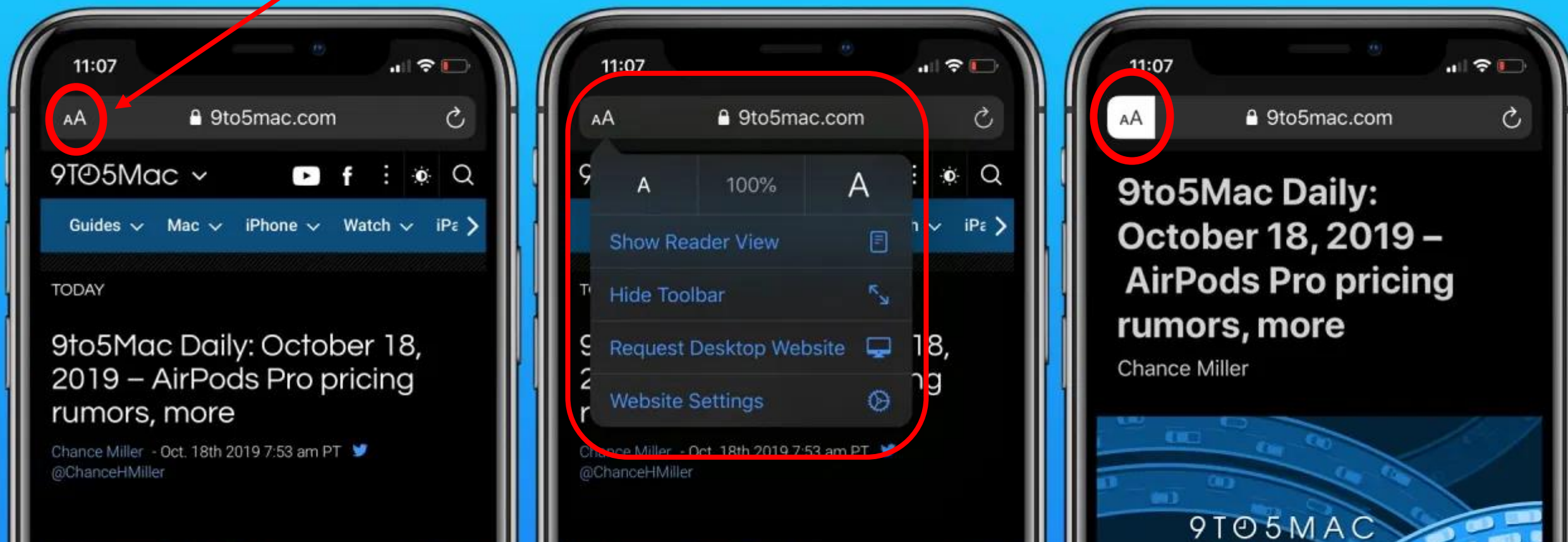
1. Launch Safari.
2. Navigate to the website you'd like to read. (How-To Geek)
3. Tap the Double 'AA' on the left of the address bar.
  - a. The dropdown menu displays 'Show Readers View' and other options.
4. Tap 'Show Readers View'
  - a. Reader View is now enabled.
  - b. much of the color and animations will be removed.
5. To disable Reader View,
  - a. tap the Reader button again.
  - b. tap 'Hide Reader View'

## How to enable Reader View

iPhone or iPad

to use Reader View immediately, long press on the aA icon

(will be grayed out when not available)



# Reader View Firefox Browser

If a web page is available in Reader View, the Reader View icon reader mode icon  will appear in the address bar.



1. Click on the Reader View icon.
  - A. The icon will turn blue when the page is in Reader View.

Tip: press the key F9 to toggle Reader View.



## Modify Reader View settings

Options will appear to the left when you view a page in Reader View:

← → ↻ 🏠  📄



blog.mozilla.org

×

Aa **Reimagine Open: Building Internet – The Mozilla Blog**

🔊

📖

3-4 minutes

Reader View options:

× : Exit Reader View.

Aa : Adjust the text size, font, line spacing and contrast in Reader View.

🔊 : Have Firefox read an article out loud in Reader View.

This option will show up only if Windows has [Text-to-speech](#) information in the language that the article is in.

📖 : Add a page to [Pocket](#).

Reader View Firefox Browser  
Windows 10

# **Use the Search Engine for your device.**

- Reader View Sony Xperia 5 II
- Readers View Samsung Galaxy Tab S7+

# Extra Extra

Extra Helpful Information.

<https://apcug2.org/>



- Hints tips and Tricks - **two** different places.

Hewie's Views & Reviews    Home    Blog    WinSIG    Tech for Seniors    Chromebooks ▾    Speakers Bureau    YouTube

## Jere's Tech Tips

Great Windows, iPhones/iPads, Android Tech Tips

[Read Jere's Latest Tips](#)



<https://hewie.net/>

## Jere's Tech Tips



<https://bit.ly/31HtCct>

Find a setting 🔍

Devices

🖨️ Bluetooth & other devices

🖨️ Printers & scanners

🖱️ Mouse

🖱️ Touchpad

⌨️ Typing

🖋️ Pen & Windows Ink

🔊 AutoPlay

📀 USB

# Bluetooth & other devices

+ Add Bluetooth or other device

## Bluetooth

On

Now discoverable as  

## Mouse, keyboard, & pen

🖱️ 2.4G Wireless Mouse

⌨️ USB Keyboard

## Audio

📹 Logitech HD Pro Webcam C920

How to connect Bluetooth devices on Windows 10.

## Keep Your Printer Turned On

By leaving an inkjet printer on, you avoid triggering a maintenance cycle each time you use it. According to our test results, that can yield big savings from your ink costs because many of the printers we evaluated used as much ink to clean the print heads as they did for actual printing.

When we kept the printers on, we saw a noticeable reduction in ink consumption even on some of the most ink-hogging models.

Worried about the cost and environmental impact from the extra energy? Inkjets consume very little power when not in use, so your ink savings should considerably outweigh those concerns.

My suggestion new  
Printer

Canon Maxify  
MB 2720 or 2120  
**4-6 Cartridges**

[Brother MFC-L5700DW](#)  
[Brother DCP-L5500DN](#)  
[Brother HL-L2395DW](#)

Some Printers go into Sleep Mode  
Automatically.

Leave the Ink Jet  
Printer **ON**

# Apps that share your data.

- 52% of apps share your data

**Top 10 apps** that share the most of your information:

- Instagram (79% of personal data collected)
- Facebook (57% of personal data collected)
- LinkedIn (50% of personal data collected)
- Uber Eats (50% of personal data collected)
- Trainline (43% of personal data collected)
- YouTube (43% of personal data collected)
- YouTube Music (43% of personal data collected)
- Deliveroo (36% of personal data collected)
- Duolingo (36% of personal data collected)
- eBay (36% of personal data collected)

# Apps that share your data.

- **Top 10 apps** that collect data for their benefit:
- Facebook
- Instagram
- Klarna
- Grubhub
- Uber
- Uber Eats
- eBay
- Just Eat
- LinkedIn
- Twitter





**iOS 14.5.1 Has been issued.**

Update iPhone, iPad, Apple watch.

### **App Tracking Transparency**

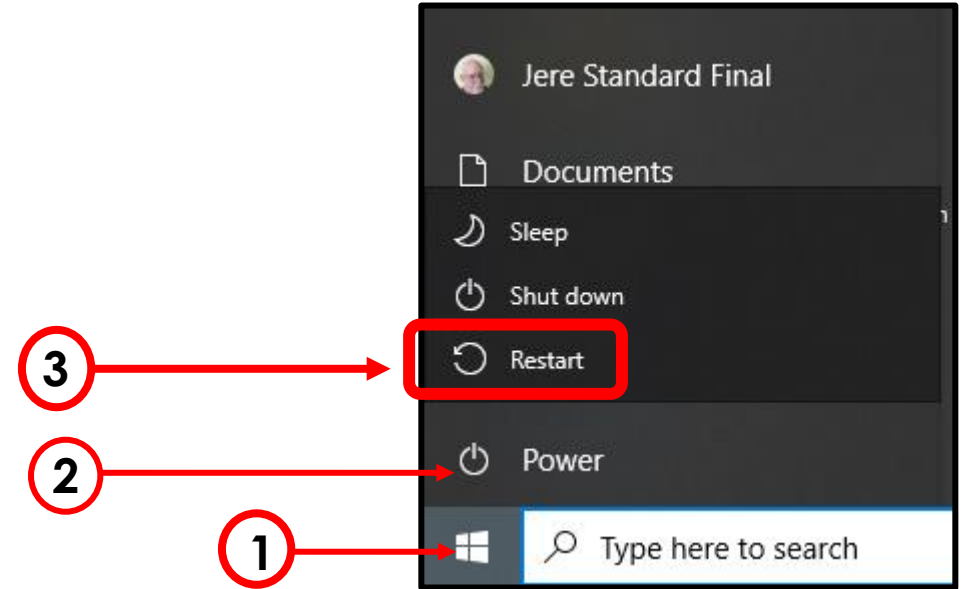
The iPhone will now require applications to ask for permission whenever they want to track your activities outside the app. Apple is not blocking the practice, merely requiring informed consent.

It make take a few days for some apps to be updated to the new requirements.

# Restart vs Shutdown

## Shutdown

- It hibernates the Operating System,
  - saving its state so it can boot faster.
  - this is done by default,
    - already set up in settings.
    - will save the state of your Windows to disk.
- After reboot,
  - these apps will re-open automatically.
    - Windows can reload the saved info,
    - and boot up more quickly,
    - skipping the slower hardware initialization process.
      - this feature is called “Fast Startup.”
  - With sleep the PC will stay powered **ON** in a very low-power mode.
  - With hibernate, the PC will save its entire system state to disk
    - and restore it when you power it on once again.
- **Restart**
  - shuts down all Programs/Apps and reloads Operating System Programs/Apps.
  - a totally clean start when the computer boots up again,



Capture any of the following types of snips:

1. Rectangular snip - Drag the cursor around an object to form a rectangle.
2. Free-form snip - Draw a free-form shape around an object.
3. Window snip - Select a window, such as a dialog box, that you want to capture.
4. Full-screen snip - Capture the entire screen.

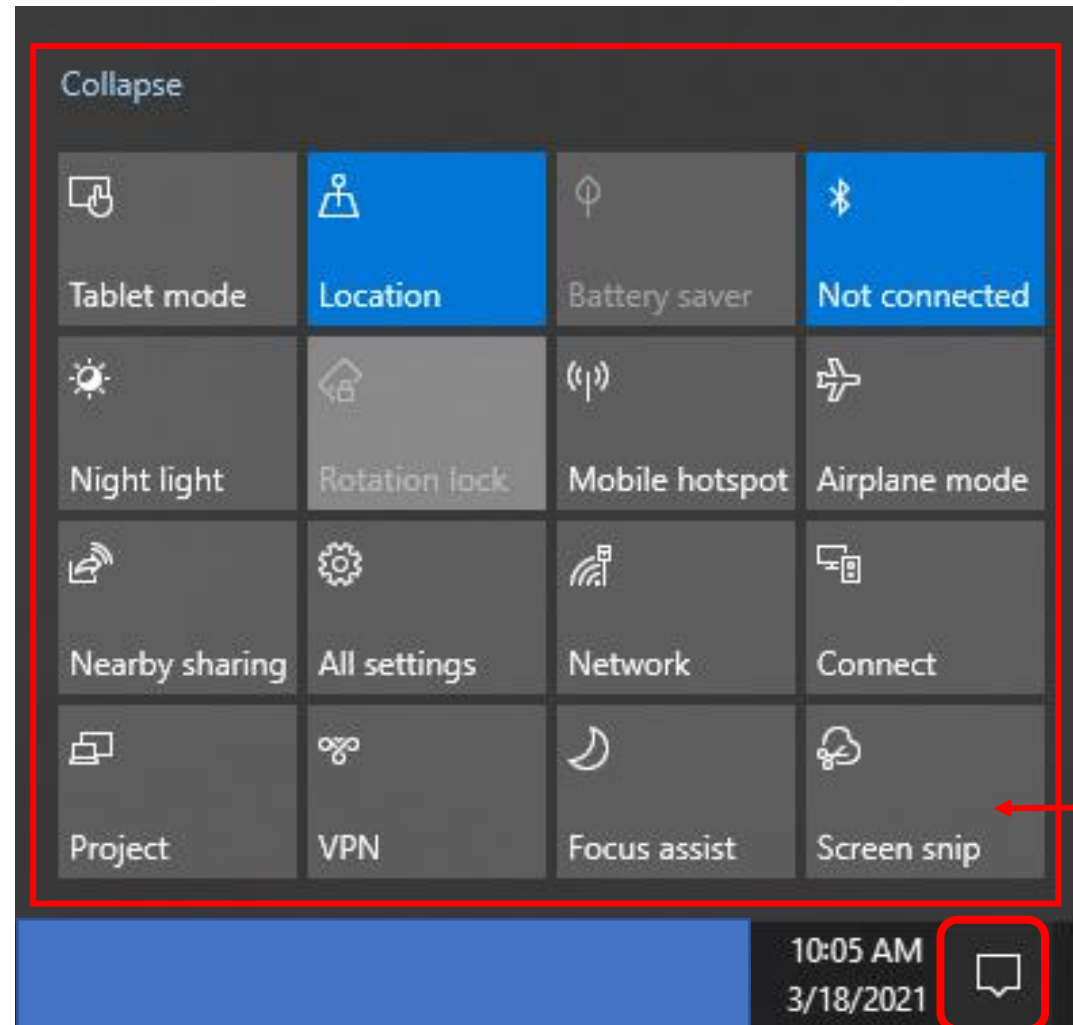
## Screen Snip



Mini Menu

1. Screen will dim and a mini menu will appear at the top.
2. The screenshot, will be saved to the clipboard.
3. Paste the screenshot into: Email, Power Point, Word processor, etc.

Screen snip via Keyboard  
**Shift+Windows Key + S**



2

1

USS James Monroe  
SSBN-622





Association of Personal  
Computer User Groups

# The End or Just the Beginning



Association of Personal  
Computer User Groups

- Copy of this Presentation:
- [programscs@gmail.com](mailto:programscs@gmail.com)

Thanks for the opportunity to share with you.

